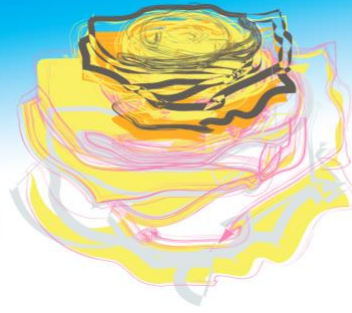




THE ANNUAL

'Sounds of Summer' Festival

Los Angeles, CA



WITH CONCERTS AT THE
*Walt Disney
Concert
Hall*

PRESENTED BY
WORLD PROJECTS

World Projects Corporation is proud to present

The 14th Annual **L.A. "Sounds of Summer" Festival** Walt Disney Concert Hall June 2020 *(Dates to be Determined)*

Dear Director:

Thank you for considering the **L.A. "Sounds of Summer" Festival** as your music performance tour in 2020. We know that you are looking for the best performance experience possible for your ensemble, and we strive to provide just that.

It is our mission to present young musicians with an experience that offers the opportunity for musical growth while creating lasting memories. To enhance this experience, the performance venue chosen for the festival is the prestigious Walt Disney Concert Hall in downtown Los Angeles. Admission into the festival is based on audition only and is limited to four adjudicated groups and one showcase university ensemble in an evening concert.

The **L.A. "Sounds of Summer" Festival** will feature an outstanding faculty of music professionals. Faculty of past World Projects events has included Dr. Lawrence Sutherland from California State University, Fresno; Felix Hauswirth, Youth Wind Ensemble of Baden Wurtemberg, Switzerland; Dr. Dennis Johnson, from Murray State University; Dr. Jo-Michael Scheibe, Director of Choral Activities, University of Southern California; Dr. Cristian Grases, Assistant Professor of Choral Music, University of Southern California; Dr. Geoffrey Boers, Director of Choirs, University of Washington; and Dr. Frank Ticheli, Professor of Composition, University of Southern California. Dr. Sutherland serves as the 2020 Festival Artistic Director.

Festival activities will include a group workshop with festival faculty, two days admission to Disneyland/California Adventure Parks, and one outdoor performance at Disneyland (subject to additional audition and acceptance). The festival culminates with ensemble performances at Walt Disney Concert Hall. One adjudicated ensemble will also be selected to work with a composer on a new work that will be premiered at Walt Disney Concert Hall.

We hope you will join us as we celebrate musical excellence in the unique atmosphere of Los Angeles. Please do not hesitate to contact us if we can be of further assistance in making this journey a reality for your group.

Sincerely,

Deborah Lee Gibbs
Chief Executive Officer
World Projects Corporation

Lawrence Sutherland
Artistic Director
2020 L.A. "Sounds of Summer" Festival

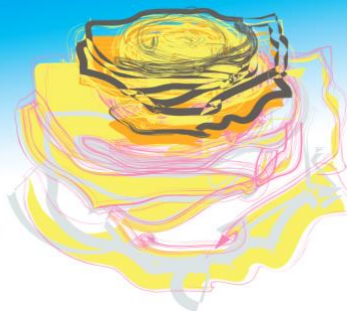




THE ANNUAL

'Sounds of Summer' Festival

Los Angeles, CA



WITH CONCERTS AT THE
Walt Disney
Concert
Hall

PRESENTED BY
WORLD PROJECTS

2020 L.A. "Sounds of Summer" Festival Schedule

(Dates to be Determined - Itinerary subject to change)

DAY ONE: June 2020 – ARRIVE INTO LOS ANGELES!

- Morning:** Groups arriving at one of the area airports will be met by a World Projects representative who will assist with loading the coaches. Transfer to an Anaheim area hotel (TBC). Groups arriving before the hotel's check-in time may choose to take a tour of the city this morning (additional costs apply). Groups arriving by coach will be met at the hotel by a World Projects staff member, who will assist with check-in.
- Afternoon:** Group arrivals. After checking in, the Director will be given a brief Festival Orientation. Groups will have free time to explore the area.
- Evening:** Dinner on own.
The rest of the evening is free!



DAY TWO: June 2020 – ANAHEIM – Outdoor Performance

- Morning:** Breakfast on own near the hotel.
Load coaches and depart for Disneyland, the happiest place on earth!
(Departure time will be determined by your performance time at the park).
Today you will enjoy an **outdoor performance** at Disneyland for the park guests (additional audition required – performance time TBC).
The rest of the day is free to enjoy Disneyland and California Adventure!
Your festival package includes a 2-Day Disney Park Hopper Pass which includes unlimited admission to Disneyland and California Adventure.
- Afternoon:** Lunch on own at the park.
- Evening:** Dinner on own at the park.
The rest of the evening is free to enjoy Disneyland and California Adventure and then return to the hotel for the evening.



DAY THREE: June 2020 – ANAHEIM – Workshop

- Morning:** Breakfast on own near the hotel.
Today you will enjoy a **workshop** with festival faculty at a nearby location and then spend the remainder of the day at Disneyland!
- Afternoon:** Lunch on own at the park. Free time to enjoy Disneyland!
- Evening:** Dinner on own at the park.
The rest of the evening is free to enjoy Disneyland and California Adventure and then return to the hotel for the evening.

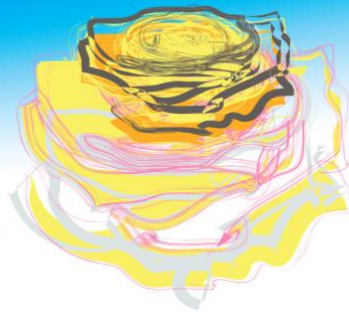




THE ANNUAL

'Sounds of Summer' Festival

Los Angeles, CA



WITH CONCERTS AT THE
*Walt Disney
Concert
Hall*

PRESENTED BY
WORLD PROJECTS

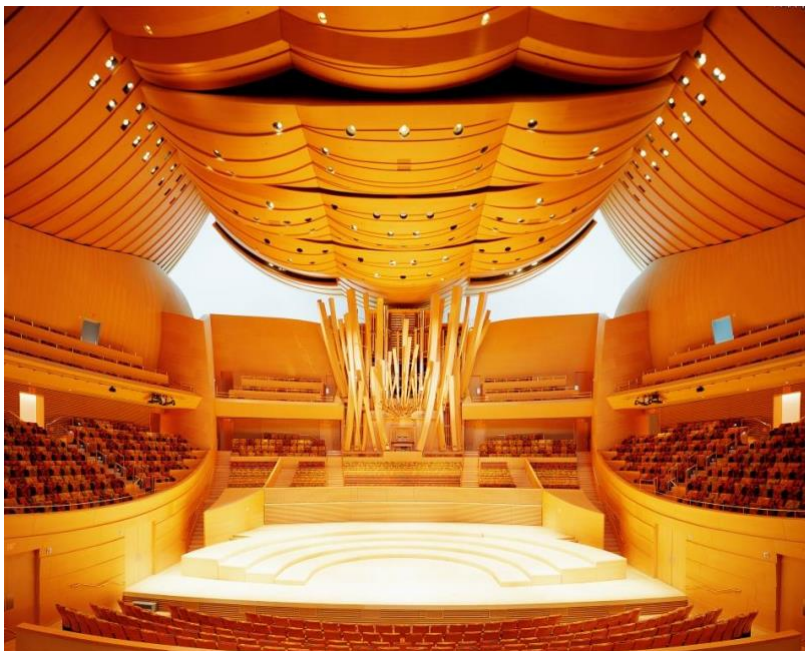
DAY FOUR: June 2020 – LOS ANGELES – Walt Disney Concert Hall Performance

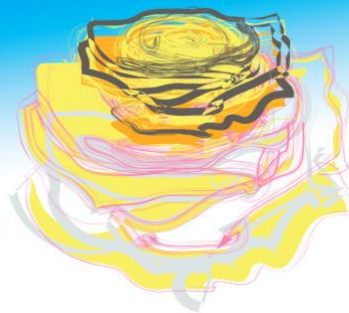
- Morning:** Breakfast on own near the hotel.
This morning is free to either explore the area or arrange for additional sightseeing (*additional costs apply*).
Lunch on own.
- Afternoon:** Groups will meet in the lobby of the hotel in performance attire with instruments. Transfer to Walt Disney Concert Hall for your group sound check. Following your sound check, store instruments in your warm up room.
- Evening:** Dinner on own in the area. Arrive back at Walt Disney Concert Hall for the **Evening Adjudicated & Showcase Concert**. Following the concert is the Awards Ceremony.

DAY FIVE: June 2020 – LOS ANGELES → HOME

- Morning:** Breakfast on own near the hotel.
Most groups will be leaving Los Angeles today. If your schedule allows, try to fit in some last-minute sightseeing, shopping, or dining.

Thank you for participating in the L.A. "Sounds of Summer" Festival!





Organization

World Projects Corporation, located in Benicia, California, produces the L.A. "Sounds of Summer" Festival. Guest conductors, clinicians, and festival staff are all of the highest quality and reputation. Dr. Lawrence Sutherland from California State University, Fresno is the Artistic Director of the 2020 L.A. "Sounds of Summer" Festival.

World Projects Mission Statement

With music education as our priority, World Projects provides musicians with life changing performance opportunities and cultural exchange through travel.

Dr. Lawrence Sutherland, Artistic Director



Lawrence Sutherland served as Director of Bands and Professor of Music at California State University, Fresno from 1969 until 2006. He earned his Bachelor of Science degree in Music Education from the University of Tulsa and his Master of Arts degree in Music Theory from the University of Missouri. His Doctor of Musical Arts degree in conducting was the first such degree to be awarded by the University. Dr. Sutherland has performing credits as a trombone and euphonium player with the St. Louis Symphony, the Kansas City Philharmonic Orchestra, the Tulsa Philharmonic Orchestra, the Tucson Symphony, the Fresno Philharmonic, and the Tommy Dorsey, Ralph Marterie, Richard Maltby, and Woody Herman bands.

Dr. Sutherland's duties at CSUF included conducting the acclaimed Fresno State Wind Ensemble and teaching classes in conducting, score study, and trombone/euphonium performance. In addition to these duties he has served as guest conductor and adjudicator throughout the United States, Canada, Europe, New Zealand, England, and Japan. He was elected President of the Western Division of the College Band Directors National Association in 1975, and in 1976 he was voted into membership in the American

Bandmasters Association. He served as the western coordinator of the National Association of Jazz Educators for eight years. In 1981, he founded the Western States Collegiate Wind Band Festival.

Dr. Sutherland is the only person to have directed all three California Music Educators All-State instrumental honor groups – Orchestra, Symphonic Band, and Jazz Band. He has been a three-time conductor of the California Band Directors All-State Concert Band and regularly conducts bands and orchestras throughout the west. He also serves as the Artistic Director for the New York International Music Festival at Carnegie Hall.

Festival Facilities

The L.A. "Sounds of Summer" Festival utilizes the Walt Disney Concert Hall, Disneyland, and an Anaheim area hotel (TBC).

Festival Accommodations

The Festival hotel is to be confirmed but will most likely be located in Anaheim, within walking distance of Disneyland (past hotels utilized include the Sheraton Park Hotel at the Anaheim Resort and the Red Lion Hotel Anaheim Resort).

Festival Adjudicated and Showcase Concert

Each participating group will have the opportunity to perform at the Walt Disney Concert Hall. The festival consists of a maximum of four (4) adjudicated ensembles and one (1) featured showcase ensemble in an evening concert. An afternoon adjudicated concert may be added once the evening performance schedule is filled. Adjudicated groups are allowed 20 minutes of on-stage performance time. **Each adjudicated ensemble must submit three copies of original scores for each piece of music being adjudicated.** Our esteemed panel of educators will adjudicate your performance and provide recorded critiques for the director. The evening concert will conclude with a featured university ensemble (30 to 45 minutes of performance time). All groups are asked to stay until the end of the Awards Ceremony.

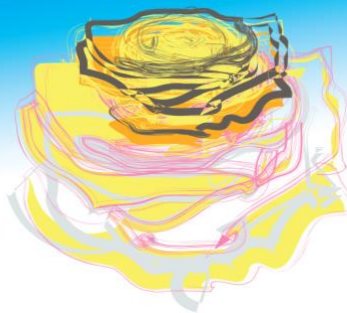




THE ANNUAL

'Sounds of Summer' Festival

Los Angeles, CA



WITH CONCERTS AT THE
*Walt Disney
Concert
Hall*

PRESENTED BY
WORLD PROJECTS

Festival Awards

Based on the performance level as perceived by the adjudication panel, each adjudicated group will receive a Gold, Silver, or Bronze award. There is no limit to the number of Gold, Silver, or Bronze awards. Each group will receive a large poster of the Festival Artwork.

Ask for our World Premiere Application!

World Projects is thrilled to continue our New Music Initiative with composers from across the United States! One new work will be World Premiered at the L.A. "Sounds of Summer" Festival. The selected adjudicated ensemble will have the honor of performing this World Premiere at the Walt Disney Concert Hall. In addition, the composer will be at the festival to work with the group on the piece at a 90-minute rehearsal prior to their adjudicated performance as well as attend the World Premiere. A separate application process is available to participating adjudicated ensembles interested in this opportunity.

Full Ensemble Workshop

Each ensemble will receive one (1) 60-minute workshop from World Projects Festival Faculty. Generally, these sessions use your group's festival music. The showcase ensemble will have one (1) 60-minute rehearsal in lieu of the workshop.

Disneyland Park Hopper and Outdoor Performance

An outdoor performance and two-day park hopper pass at Disneyland are included in the festival package. **Participants must submit additional application materials for the opportunity to perform for 25 minutes in the Disneyland or California Adventure Theme Parks.** Free time in the parks will be scheduled around the group's performance and Festival workshop schedules. Groups will have the option of including a Disneyland workshop to their package (*additional cost applies*).

Limited Participation

In order to ensure a quality experience, the festival is limited to four (4) adjudicated ensembles and one (1) university showcase ensemble; however, as previously noted, an afternoon adjudicated session may be added once the evening session is full. Ensembles that are denied entry based on available festival capacity in 2020 will be given first preference to attend the 2021 event (*unless an organization is denied entry based on its audition submission*). Once accepted, space for an ensemble can only be guaranteed upon receipt of the non-refundable deposit (*see Payment and Cancellation Schedule*).

Other Sightseeing Options

There will be limited time during the festival for optional group sightseeing in the Los Angeles region. Tours of Hollywood, Beverly Hills, the Farmer's Market, or the Getty Center can be arranged. For those groups wishing to enjoy other theme parks such as Universal Studios, Six Flags Magic Mountain, and/or Knott's Berry Farm or visit the Santa Monica Pier or the beach, it is recommended that these groups lengthen their visit by one or two nights. World Projects can extend your group's stay in Southern California to include sightseeing in Los Angeles or San Diego (*additional costs apply*).

Directors' Orientation Meeting

On the first evening, directors will meet (either individually or as a group) with the festival coordinator to receive festival materials, tickets, and t-shirts. This meeting also allows the director to meet the Festival staff and ask any last-minute Festival questions. If a director is unable to attend this meeting, please send a representative from the group.

Traveling Group Size

As the festival is limited to only 5 groups, each group will be required to have a minimum of 40 travelers. This minimum will be for the full traveling group and may be composed of performers, staff, and chaperones.

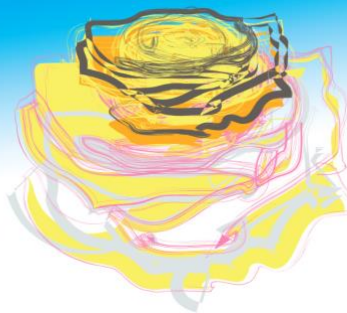




THE ANNUAL

'Sounds of Summer' Festival

Los Angeles, CA



WITH CONCERTS AT THE
*Walt Disney
Concert
Hall*

PRESENTED BY
WORLD PROJECTS

Chaperones

The Festival hotel requests all youth groups in attendance to have a **minimum of one adult chaperone for every ten to twelve students**. Please contact your World Projects representative for more information. Chaperones must stay in the same hotel as the students, taking a participant package as part of the group arrangement. Please check your school's chaperone requirements as well.

Air Travel Arrangements

World Projects can arrange air travel to and from the L.A. "Sounds of Summer" Festival at competitive market rates. For round-trip air travel from your area to Los Angeles, contact the World Projects office toll free at (800) 922-3976.

Additional Information

- ◆ Please note that walking to and from festival venues may be required.
- ◆ Weather in Los Angeles in June is often very warm. Please bring appropriate clothing and sunblock.
- ◆ **All types of recording and photography are strictly prohibited inside Walt Disney Concert Hall.**

Director's Information Packet

A Director's Information Packet will be mailed to all accepted and deposited groups. This packet will contain more detailed information regarding the Festival, as well as forms to be completed by each group and returned to *World Projects* headquarters.

Festival Application Procedure

Send a completed application form (*attached*) and anticipated festival repertoire to: L.A. "Sounds of Summer" Festival, 601 First Street, Suite 200; Benicia, CA 94510 USA. Groups wishing to be considered for an outdoor performance at Disneyland must be prepared to also submit at least 2 "upbeat" video clips that are representative of your performance level and a photograph of your ensemble in performance attire.

The application deadline for the 2020 festival is December 1, 2019; however, early application is strongly encouraged. Each ensemble accepted for participation will be required to submit a US \$2,000.00 non-refundable deposit in order to hold space in the festival and which will be applied to the final group invoice. Ensembles will be admitted based on their audition submission and on a space available basis until the festival is full. An ensemble may be accepted into the festival after the application deadline with the approval of the Artistic Director, Dr. Lawrence Sutherland, if space is available.

Festival Participation Agreement

Once your group deposit has been received, World Projects will require the group leader to sign a Group Festival Agreement which will outline terms and conditions including package costs, inclusions/exclusions, and the payment & cancellation schedule. Additionally, all travelers will be required to submit signed liability waivers and medical authorization forms as issued by World Projects in order to participate in the festival.

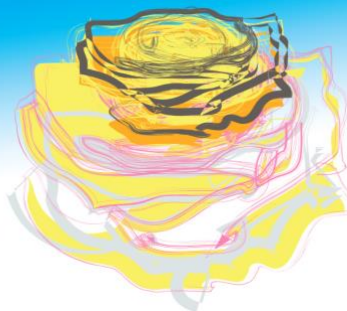




THE ANNUAL

Sounds of Summer Festival

Los Angeles, CA



WITH CONCERTS AT THE
Walt Disney
Concert
Hall

PRESENTED BY
WORLD PROJECTS

Package Inclusions

- ◆ One gratis ground package for your staff for every 20 paid participants (*based on double occupancy*)
- ◆ Four nights' accommodation at an Anaheim area hotel (*TBC*)
- ◆ Hotel taxes
- ◆ Airport transfers for group and baggage in Los Angeles
- ◆ All required group coach transportation during the festival
- ◆ One (1) 60-minute ensemble workshop with festival clinician (*or 60-minute rehearsal for showcase groups*)
- ◆ Sound check on stage at Walt Disney Concert Hall
- ◆ Festival performance and recorded critiques at Walt Disney Concert Hall
- ◆ One (1) Festival performance recording for director, Walt Disney house system (*archival use only*)
- ◆ One (1) outdoor "pops" style performance at Disneyland or California Adventure Park (*additional audition required*)
- ◆ Two-Day Park Hopper Pass for Disneyland/California Adventure Park
- ◆ Official Festival t-shirt
- ◆ Artist pass lanyard
- ◆ Official Festival souvenir program
- ◆ Festival registration fees
- ◆ Access to all Festival concerts and events
- ◆ Large Festival Artwork Poster for each group
- ◆ Group award plaque
- ◆ Official Festival photographer at Walt Disney Concert Hall (*prints not included*)
- ◆ Large instruments & equipment as noted:
 - ◆ Conductor's Podium, Piano/Keyboard, Two (2) String Basses, Timpani (set of 4), Concert Bass Drum, Marimba, Xylophone, Vibraphone, Chimes (Tubular Bells), Orchestra Bells (Glockenspiel), Tam-Tam

Package Exclusions

- ◆ Airfare (*available through World Projects — see Air Travel Arrangements*)
- ◆ Meals not indicated in the inclusions
- ◆ Items of a personal nature (*laundry, room service, internet connection fee, etc.*)
- ◆ Additional instrument rentals (*World Projects can arrange rentals at additional costs*)
- ◆ Any baggage storage charges at the hotel (for arrivals before 4:00pm or departures after 12:00 noon)
- ◆ Additional sightseeing excursions (*World Projects can arrange a variety of Los Angeles sightseeing activities which are presented as Optional Sightseeing Activities in the Director's Packet*)
- ◆ Group transfers to non-festival events

Payment and Cancellation Schedule

| Date | Payment / Type | Cancellation / Refund |
|------------------|------------------------------|---|
| Upon Acceptance | US \$2,000 deposit per group | Non-refundable, credited to final payment |
| December 1, 2019 | US \$350 per person | 50% refundable to January 15, 2020 |
| April 1, 2020 | Balance in Full | 50% refundable to April 15, 2020 |

All payments must be made by school check, bank check or cash – credit cards will not be accepted

Festival Participation is based on a minimum group size of 40 travelers.



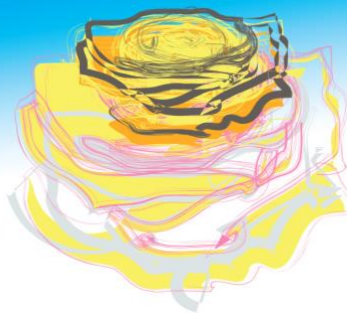


PRESENTED BY
WORLD PROJECTS

THE ANNUAL

'Sounds of Summer' Festival

Los Angeles, CA



WITH CONCERTS AT THE
*Walt Disney
Concert
Hall*

FESTIVAL FREQUENTLY ASKED QUESTIONS

1. Do chaperones / adults / non-performing travelers have to pay the same package costs as the performers?

Yes. In order to keep the cost of participating in the Festival affordable for as many students as possible, World Projects presents a blanket package cost. Creating a reduced rate for non-performers would increase the performer costs significantly, and thus we maintain one cost for all travelers.

2. Does the package cost cover any type of Travel or Medical Insurance?

For United States based groups, World Projects will purchase a Student Protection Plan (post departure) for all travelers. The director will be sent details about the plan. Groups traveling from outside the United States are not eligible for the Student Protection Plan, but are encouraged to purchase a similar post departure trip protection plan where possible. Trip Cancellation insurance is not included but can be arranged through World Projects upon request at an additional cost. Individuals may also receive quotes for Trip Cancellation insurance here:

www.world-projects.com/travel-insurance

3. Does World Projects have any type of Liability Insurance?

Yes. According to California State Law, World Projects is required to hold \$3 million Travel Agents Professional Liability Insurance Coverage. This is not a form of Travel, Medical, or Trip Cancellation Insurance for groups—rather a form of insurance coverage for World Projects.

Upon request, World Projects can list your school and/or school district as a 'co-insured'. A customized Certificate of Liability will then be produced showing your school and/or school district as a co-insured for the event you are attending. For further detailed information, World Projects can provide a copy of the Liability Policy upon request.

4. In the event that my child cannot attend the Festival after making payments, what is the refund policy?

World Projects has put in place a generous cancellation schedule, which can be found in this prospectus. This schedule outlines the percentage of payments made that are refundable and until when. All cancellation charges (if any apply) will be represented on your group's final invoice.

When cancellations occur, our first recommendation is that a replacement is found to take the cancelled traveler's spot on the tour. That way, all finances can be dealt with internally at the school or organization, and cancellation fees need not be assessed (unless air transportation is involved).

World Projects does, however, acknowledge that unforeseen circumstances do arise and will be reviewed on a case-by-case basis. In the event of a death in the family or illness/injury that prevents travel (as examples), World Projects will review what monies can be recovered from outside vendors (such as airlines, hotels, etc.). These vendors establish their own cancellation schedules, which World Projects must adhere to.

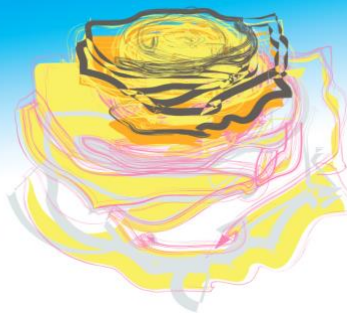




THE ANNUAL

'Sounds of Summer' Festival

Los Angeles, CA



WITH CONCERTS AT THE
*Walt Disney
Concert
Hall*

PRESENTED BY
WORLD PROJECTS

5. When do I need to submit rooming lists, repertoire, and other information about my group?

About six months out from the event (or after this date for late applicants), World Projects will send you a Director's Packet. Included in this packet are a number of forms we have created to make submitting necessary information to us as simple as possible. World Projects customizes each Director's Packet so only the forms that apply to your group are included. We ask that these forms be returned to us approximately 3-4 months out of an event, allowing us enough time to make all of the arrangements for your festival experience. We do understand that changes may occur after information is submitted and will try to accommodate changes when possible.

6. I want all of my students to be in quad rooms; however, after putting together my rooming list I've discovered I have an odd number of students left over. Can they stay in a triple, double, or single room at the quad rate?

World Projects has created four different packages based on the different rooming configurations. Unfortunately, in this type of forced rooming situation, World Projects cannot make concessions for the package rates. What we recommend is that the additional cost of these packages compared to the quad rate be prorated among the paying travelers. This generally works out to be a very small additional cost per person.

7. Can World Projects organize any sightseeing activities or meals for my group outside of the Festival package? Can we arrange sightseeing ourselves?

Yes. World Projects will supply you with an 'Optional Sightseeing Activities' form in the Director's Packet. This form will include a number of popular sightseeing activities in the Festival city and the additional costs. Once you have selected the activities you wish to enjoy, World Projects will arrange these tours for your group around your Festival commitments.

Should you wish to partake in a sightseeing activity not listed on the form, World Projects will research costs and present these to you. All additional costs for optional sightseeing activities will be represented on your group's final invoice.

You are also welcome to make your own sightseeing arrangements for your group or for individual travelers. However, World Projects does request that we are informed of the date and times of your group sightseeing activities to ensure that there are no conflicts with your Festival commitments.

8. Can World Projects arrange air travel for my group? If so, how does this work?

World Projects will be able to provide competitive quotes and prompt service to all of our clients requesting air costs.

World Projects will make all of the initial inquiries on your behalf, and should you decide to take any of the quotes offered, we will act as your representative on all aspects of your air transportation including the names list, equipment list, etc. World Projects will invoice you separately for airfare related costs.

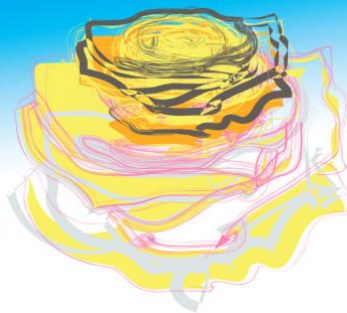




THE ANNUAL

Sounds of Summer Festival

Los Angeles, CA



WITH CONCERTS AT THE

Walt Disney
Concert
Hall

PRESENTED BY
WORLD PROJECTS

9. Can you explain the invoicing process to me in further detail?

Upon acceptance, each performing group will be invoiced for the \$2,000 nonrefundable deposit which secures your position in the Festival.

The next payment request is a per person progress payment. World Projects will invoice you for the total number of travelers indicated in recent correspondence or on your Festival application form. This total number of travelers invoiced will include any applicable gratis travelers. The value amount of a gratis package (the cost of a double occupancy package) will be credited to your final invoice.

The Final Invoice will show a detailed breakdown of all costs associated with your tour (including the rooming summary, any optional sightseeing or meals, and any applicable cancellation charges). Your final balance due will be based on these calculations. Any additions to your tour after the final invoice has been created and sent will be billed on a Supplemental Invoice.

10. Can World Projects organize additional equipment for our group to use during the Festival (i.e. string bass, additional percussion, etc.)?

Depending on the availability of the instrument(s) requested, World Projects can arrange the rental of extra instruments not provided by the Festival at an additional cost. In some cases, there may be other ensembles that are also in need of the same additional equipment. In this instance, World Projects can often split the additional equipment cost between ensembles. Please contact the Festival Operations Manager with your requests as early as possible.

11. At what point can we expect a personalized itinerary for our time during the Festival?

The itinerary shown in the Prospectus acts as a guide for what you can expect during the event. After your progress payment has been received, World Projects will send you a draft individual schedule, which will give you a better idea of your group's movements during the event.

From this point on, the Festival Operations Manager will continue to update your group's schedule with new information such as exact performance, workshop, and meal times, venues, etc. Before you depart for the Festival, you will have a FINAL itinerary for your time during the event.

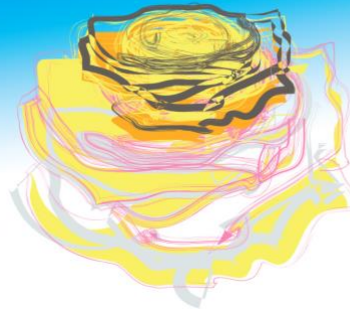




THE ANNUAL

Sounds of Summer Festival

Los Angeles, CA



WITH CONCERTS AT THE
Walt Disney
Concert
Hall

PRESENTED BY
WORLD PROJECTS

L.A. "SOUNDS OF SUMMER" FESTIVAL June 2020 Official Application Form

NOTE: Applications close on December 1, 2019 or when the Festival is full.

Please circle the type of ensemble applying to participate
(A separate application form must be submitted for each ensemble applying):

- | | | | |
|------------------|--------------------|-------------------|---------------|
| Wind Ensemble | Symphonic Band | Concert Band | |
| String Orchestra | Symphony Orchestra | Chamber Orchestra | |
| Concert Choir | Chamber Choir | Men's Choir | Women's Choir |

Please indicate the year your group wishes to participate: 2020 2021

Name of School/Organization: _____
 Name of Ensemble: _____
 Name of Director (with title): _____
 Director Cell Number: _____
 Address of Ensemble: _____ City: _____
 State or Province: _____ Postal Code: _____ Country: _____
 Telephone: _____ Facsimile: _____ Email: _____

Number of Participants

Performers in Ensemble: _____
 Directors: _____
 Staff: _____
 Administrators: _____
 Chaperones: _____
 Total Number of Participants: _____

Previous festivals and tours attended by group: _____

Recent repertoire: _____

Please send the following items with this application:

1. 2-3 recent "upbeat" video clips representative of your group
2. Recent Photograph of your ensemble in performance attire
3. Any copies of previous adjudication or judging forms (if available) OR a current repertoire list.

If accepted, a non-refundable deposit of US \$2,000.00 per group made payable to WORLD PROJECTS is required to hold space in the Festival.

Signatures: _____
 Group Director School Principal or Group Administrator
 Date: _____ Date: _____

Please return this form and all materials to:

L.A. "Sounds of Summer" Festival
World Projects Corporation
601 First Street, Suite # 200
Benicia, CA 94510 USA

